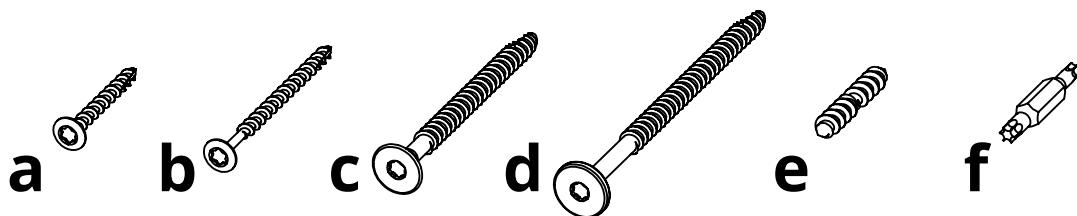


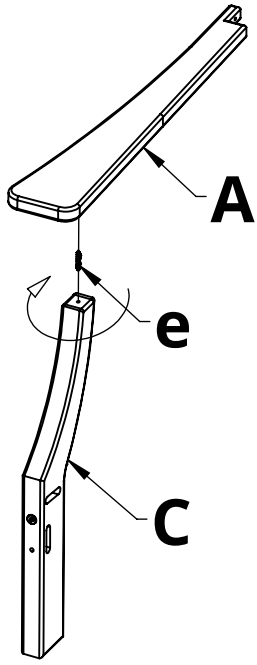
| PARTS |                      |           |     |
|-------|----------------------|-----------|-----|
| PART  | DESCRIPTION          | PART NO.  | QTY |
| A     | LEFT ARM             | PRT-00454 | 1   |
| B     | RIGHT ARM            | PRT-00455 | 1   |
| C     | LEFT FRONT LEG       | PRT-00452 | 1   |
| D     | RIGHT FRONT LEG      | PRT-00453 | 1   |
| E     | SEAT SUPPORT         | PRT-00457 | 2   |
| F     | LEFT SIDE ASSEMBLY   | SA-00236  | 1   |
| G     | RIGHT SIDE ASSEMBLY  | SA-00237  | 1   |
| H     | BACK ASSEMBLY        | SA-00240  | 1   |
| I     | LOVE SEAT SLAT       | SS-48.5   | 6   |
| J     | LOVE SEAT FRONT SLAT | SS-48     | 1   |
| K     | FRONT/BACK SPREADER  | PRT-00459 | 2   |



| HARDWARE |                        |             |     |
|----------|------------------------|-------------|-----|
| PART     | DESCRIPTION            | PART NO.    | QTY |
| a        | #8 X 1-1/2" TORX SCREW | H-0000-S815 | 32  |
| b        | #8 X 2-1/2" TORX SCREW | H-0000-S825 | 10  |
| c        | 1/4"-10 X 3" LAG SCREW | H-0000-S103 | 2   |
| d        | 1/4"-10 X 4" LAG SCREW | H-0000-S104 | 4   |
| e        | DOUBLE SCREW           | H-0000-DS   | 2   |
| f        | T20 & T25 TORX BIT     | H-0000-CTD  | 1   |

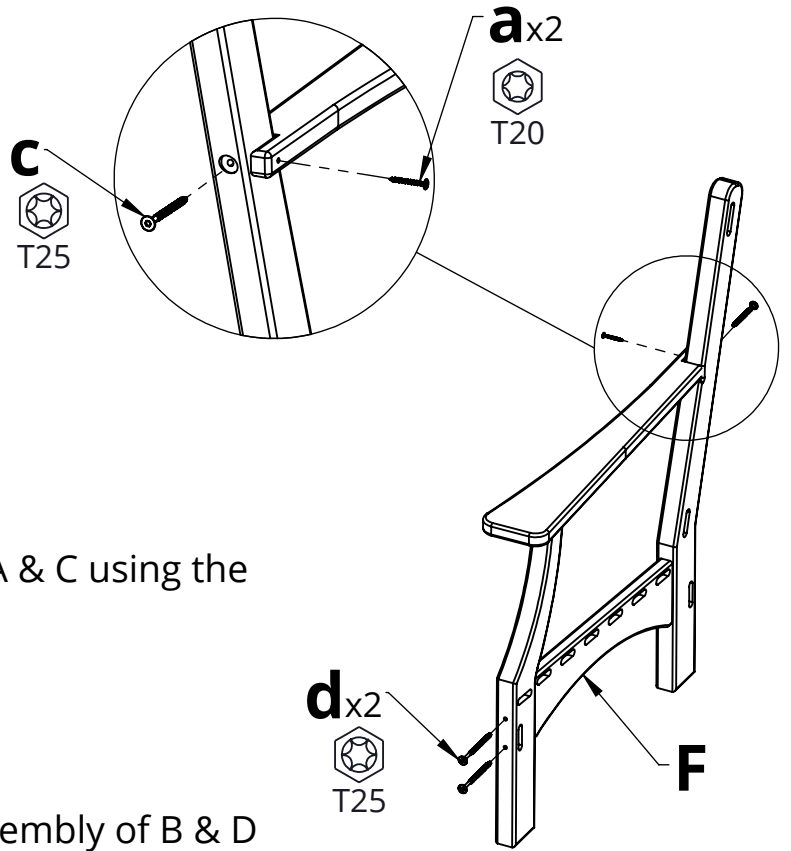
**Suggested Tools:** Drill, Plastic Mallet

# Please read entire instructions before beginning



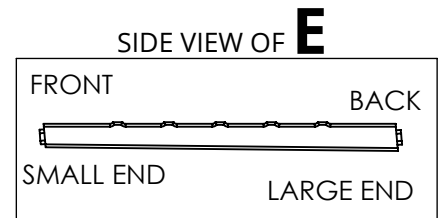
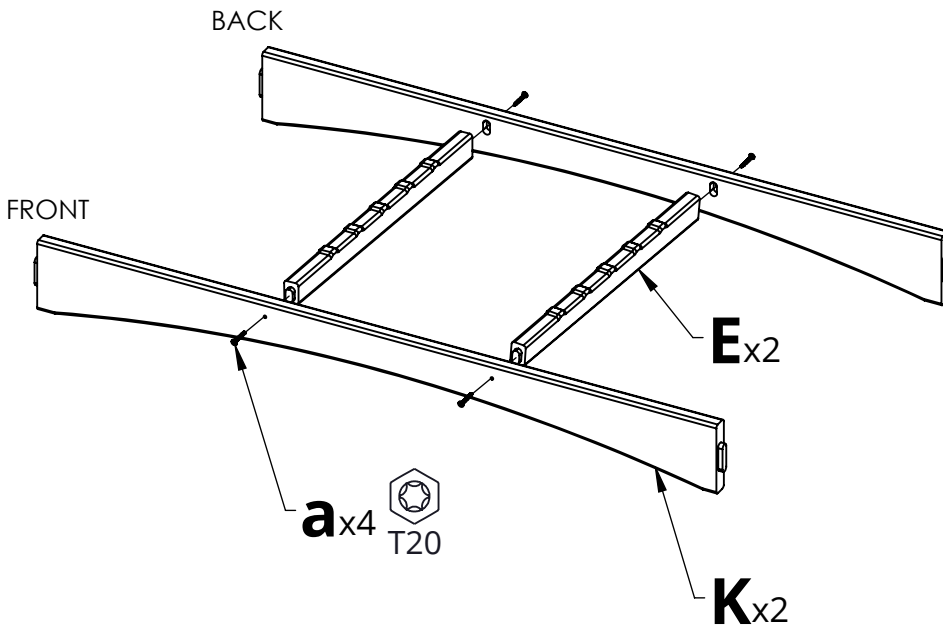
**1.** Attach Part A to Part C with Hardware e by rotating Part A clockwise, stopping when the assembly is tight

**2.** Repeat Step 1 with Parts B & D

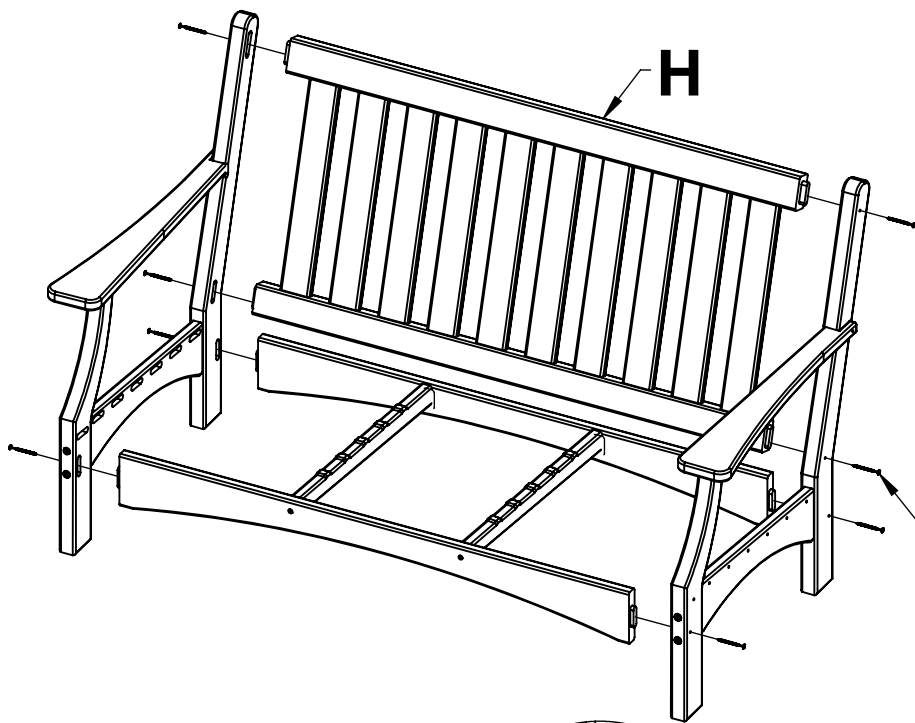


**3.** Connect Part F to the assembly of A & C using the hardware shown


**4.** Repeat Step 3 with Part G & the assembly of B & D

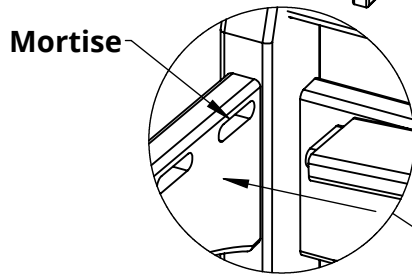


**5.** Attach Parts K to Parts E using Hardware a



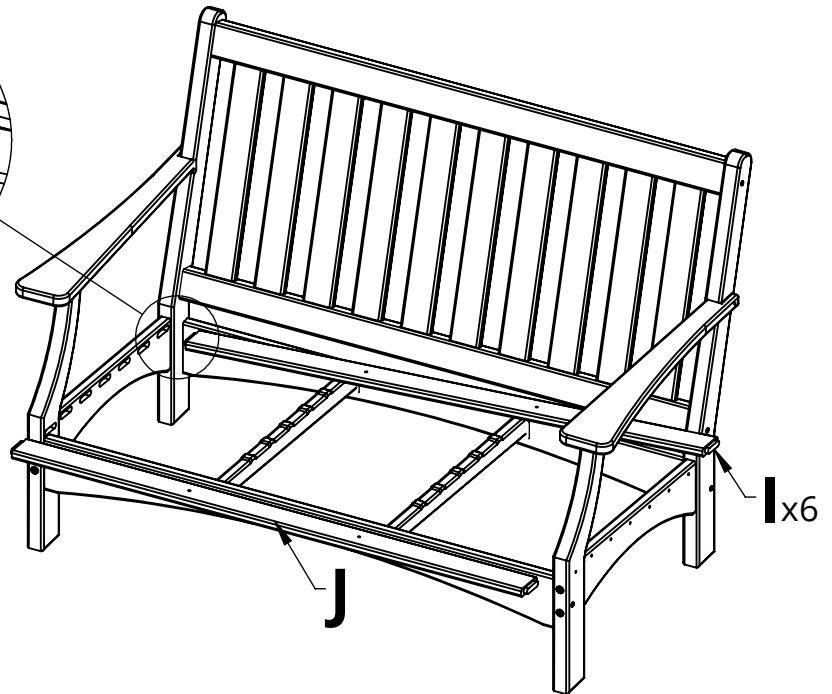
**6.** Connect the side assemblies, Part H, & the previous assembly using Hardware b

**b**x8   
T20

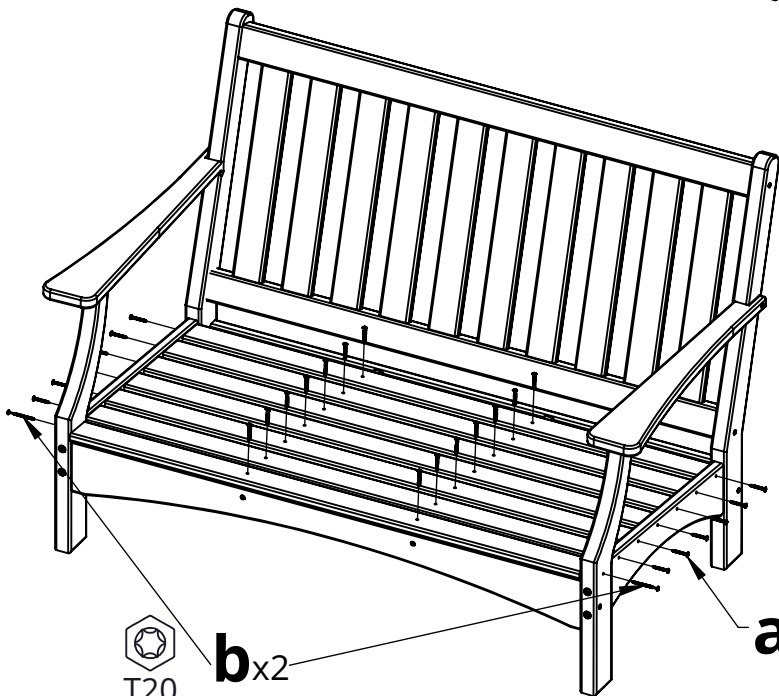


**7.** Starting in the back, slide Parts I into the mortise & flex them to fit into the opposite mortise

**8.** Repeat Step 7 with Part J



**I**x6



**9.** Attach the other side assembly using the hardware shown

  
T20 **b**x2

**a**x26   
T20