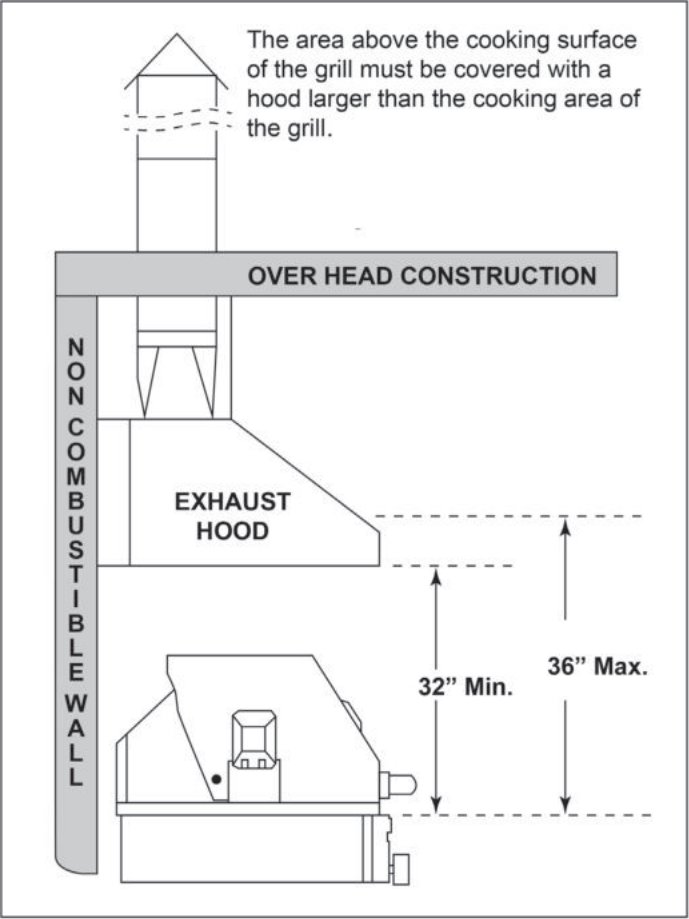
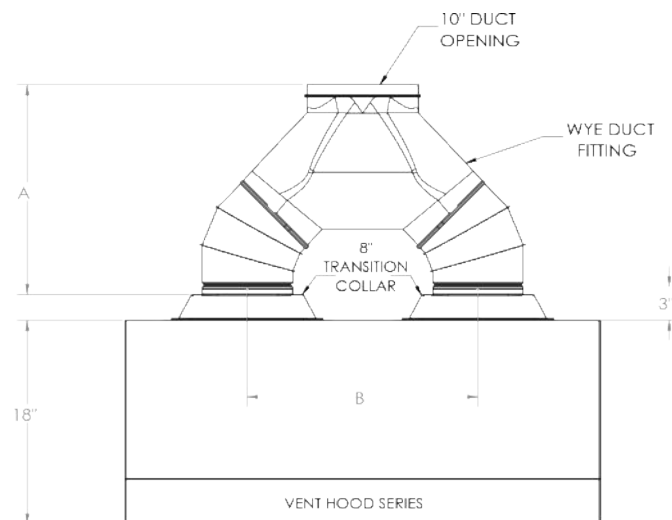
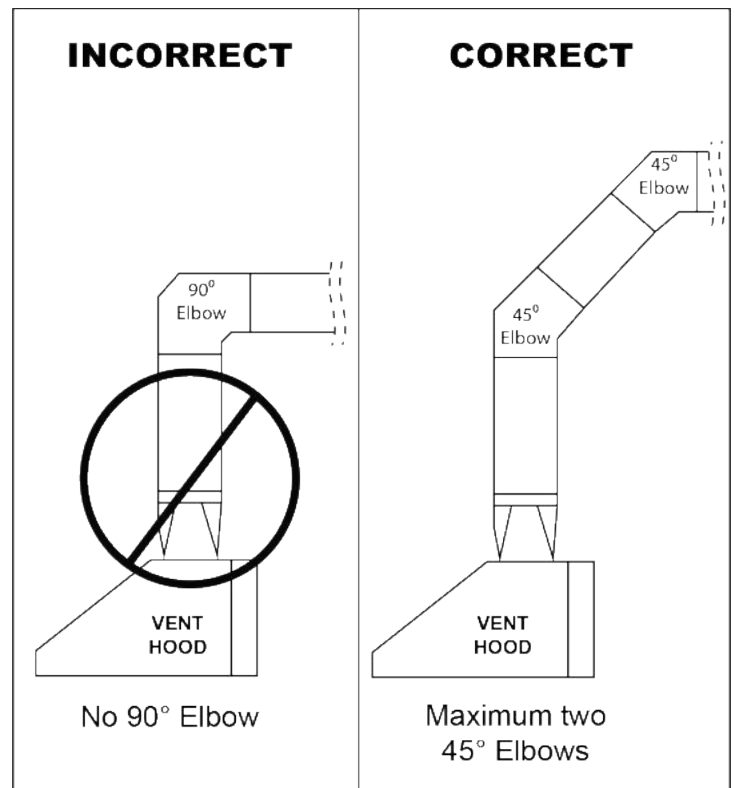


| ITEM # | DESCRIPTION | VH36-2 | | VH42-3 | | VH48-3 | | VH60-3 | | VH72-3 | |
|--------|--------------------------------|------------|-----|------------|-----|------------|-----|------------|-----|------------|-----|
| | | VH36-2 | QTY | VH42-3 | QTY | VH48-3 | QTY | VH60-3 | QTY | VH72-3 | QTY |
| 1 | 1/2" MOUNTING TEMPLATE | VH36-2-SPT | 1 | VH42-3-SPT | 1 | VH48-3-SPT | 1 | VH60-3-SPT | 1 | VH72-3-SPT | 1 |
| 2 | 4" VENT HOOD SPACER (optional) | VH36-2-SP4 | 1 | VH42-3-SP4 | 1 | VH48-3-SP4 | 1 | VH60-3-SP4 | 1 | VH72-3-SP4 | 1 |
| **2a | 8" VENT HOOD SPACER (optional) | VH36-2-SP8 | 1 | VH42-3-SP8 | 1 | VH48-3-SP8 | 1 | VH60-3-SP8 | 1 | VH72-3-SP8 | 1 |
| 3 | DUCT COVER (optional) | VH36-2-DC | 1 | VH4272-DC | 1 | VH4272-DC | 1 | VH4272-DC | 1 | VH4272-DC | 1 |
| 4 | VENT HOOD ASSEMBLY | - | 1 | - | 1 | - | 1 | - | 1 | - | 1 |
| 5 | KNOB | 11344 | 2 | 11344 | 2 | 11344 | 2 | 11344 | 2 | 11344 | 2 |
| 6 | LIGHT CONTROLLER | 11387 | 1 | 11387 | 1 | 11387 | 1 | 11387 | 1 | 11387 | 1 |
| 7 | FAN CONTROLLER | 11343 | 1 | 11343 | 1 | 11343 | 1 | 11343 | 1 | 11343 | 1 |
| 8 | LED LIGHT | 11388 | 2 | 11388 | 4 | 11388 | 4 | 11388 | 4 | 11388 | 4 |
| 9 | BAFFLE FILTER - 12" | 11389 | 3 | 11389 | 3 | 11389 | 4 | 11389 | 5 | 11389 | 6 |
| **9a | BAFFLE FILTER - 6" | - | | 11399 | 1 | - | | - | | - | |
| 10 | BLOWER PLATE | 11398 | 1 | 11398 | 2 | 11398 | 2 | 11398 | 2 | 11398 | 2 |
| 11 | 1000 CFM BLOWER | 12383 | 1 | 12383 | 2 | 12383 | 2 | 12383 | 2 | 12383 | 2 |
| 12 | GREASE TUBE | 11393 | 1 | 11394 | 1 | 11395 | 1 | 11396 | 1 | 12387 | 1 |
| 13 | TRANSITION COLLAR FOR 8" VENT | 11397 | 1 | 11397 | 2 | 11397 | 2 | 11397 | 2 | 11397 | 2 |
| **14 | CAPACITOR | 11342 | 1 | 11342 | 2 | 11342 | 2 | 11342 | 2 | 11342 | 2 |
| **15 | LED LIGHT TRANSFORMER | 11034 | 1 | 11034 | 2 | 11034 | 2 | 11034 | 2 | 11034 | 2 |
| **16 | POWER CORD | 11517 | 1 | 11517 | 1 | 11517 | 1 | 11517 | 1 | 11517 | 1 |

** NOT SHOWN





| VH-3-WDF | | |
|----------|------|------|
| MODEL # | A | B |
| VH42-3 | 18½" | 20⅝" |
| VH48-3 | | |
| VH60-3 | | |
| VH72-3 | | |



WARNING

Severe Injury

Hood may have very sharp edges. Please wear protective gloves if it is necessary to remove any parts for installing, cleaning or servicing.



WARNING

Excessive Weight

Require three or more persons to move and install this vent hood. Spinal or other bodily injuries could occur if it is not followed.

BEFORE INSTALLING THE VENT HOOD, CHECK FOR PHYSICAL DAMAGES.
THIS VENT HOOD COMES EQUIPPED WITH A POWER CORD.
TEST THE HOOD BEFORE INSTALLATION.

If there is a grinding noise coming from the motor. **DO NOT INSTALL IT**
Contact us as soon as possible.

1. Read the entire installation guide and users manual thoroughly, understand instructions and warnings.
2. Be familiar with the controls of the vent hood.
3. Place the Vent hood on a flat, stable surface. Connect the vent hood to a designated standard outlet (please refer the product label for the suitable voltage of this unit) and verify no debris has entered the duct openings, then turn on the vent hood.
4. Place all supplied parts and required hardware on a flat, stable surface and **VERIFY** the existence of all supplied parts.
5. Carefully remove the plastic protective coat from the chimney covers and vent hood if any.

NOTE: To avoid damage to your hood, prevent debris from entering the duct opening.

1. Disconnect power cord, remove the stainless steel baffle filter and grease tunnel.
2. Set aside the stainless steel baffle filters and grease tunnel until the vent hood is properly installed.



WARNING

Hazard of electrical shock!

DO NOT perform service on an electrically live system.
Disconnect the main electrical supply before servicing this device.
Touching electrical connectors or other exposed electrical
Circuitry inside this vent hood when they are energized could
result in death, serious bodily injury, or property damage.

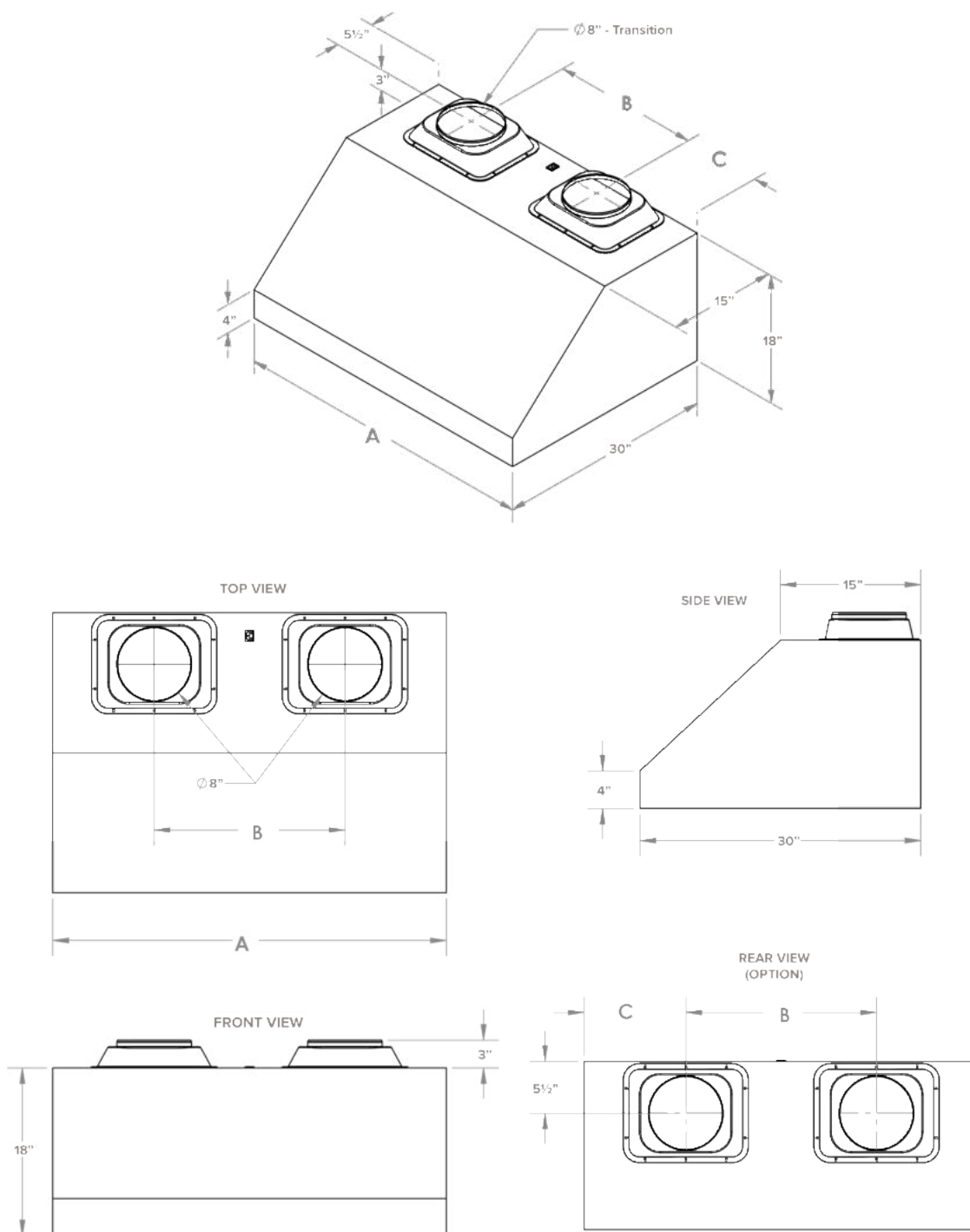


WARNING

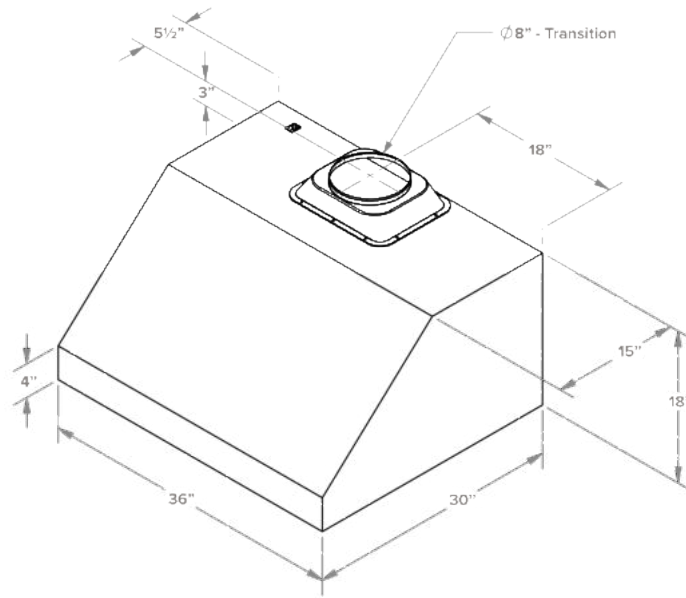
Severe Injury

Rotating fan can cause severe injury.
Stay clear of fan when motor is running.

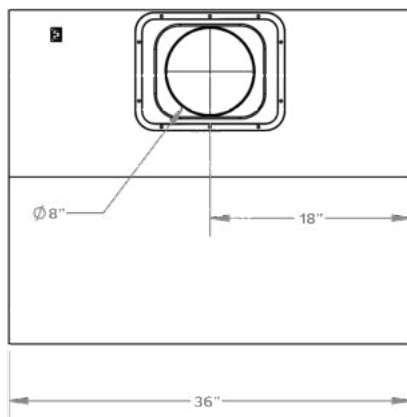
SAFETY WARNING: Risk of electrical shock. this vent hood must be properly grounded. Make sure this is done by qualified electrician in accordance with all applicable national and local electrical codes. Before connecting wires, switch power off at service panel and lock service panel to prevent power from being switched on accidentally.



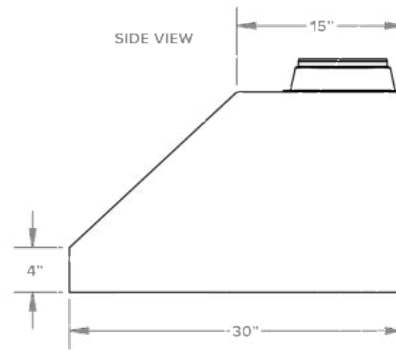
| VENT HOOD DIMENSIONS | | | |
|----------------------|-----|-------------------|--------------------|
| MODEL # | A | B | C |
| VH42-3 | 42" | 20 $\frac{3}{8}"$ | 10 $\frac{3}{16}"$ |
| VH48-3 | 48" | 20 $\frac{3}{8}"$ | 13 $\frac{3}{16}"$ |
| VH60-3 | 60" | 20 $\frac{3}{8}"$ | 19 $\frac{3}{16}"$ |
| VH72-3 | 72" | 20 $\frac{3}{8}"$ | 25 $\frac{3}{16}"$ |



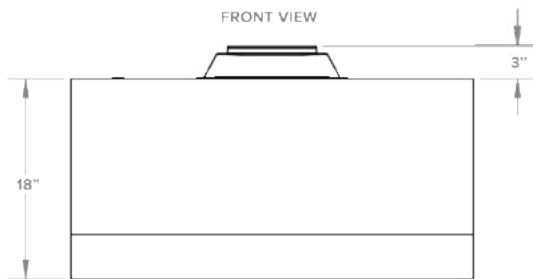
TOP VIEW



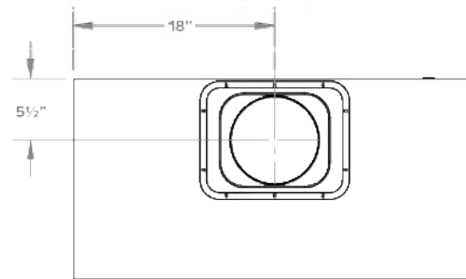
SIDE VIEW



FRONT VIEW

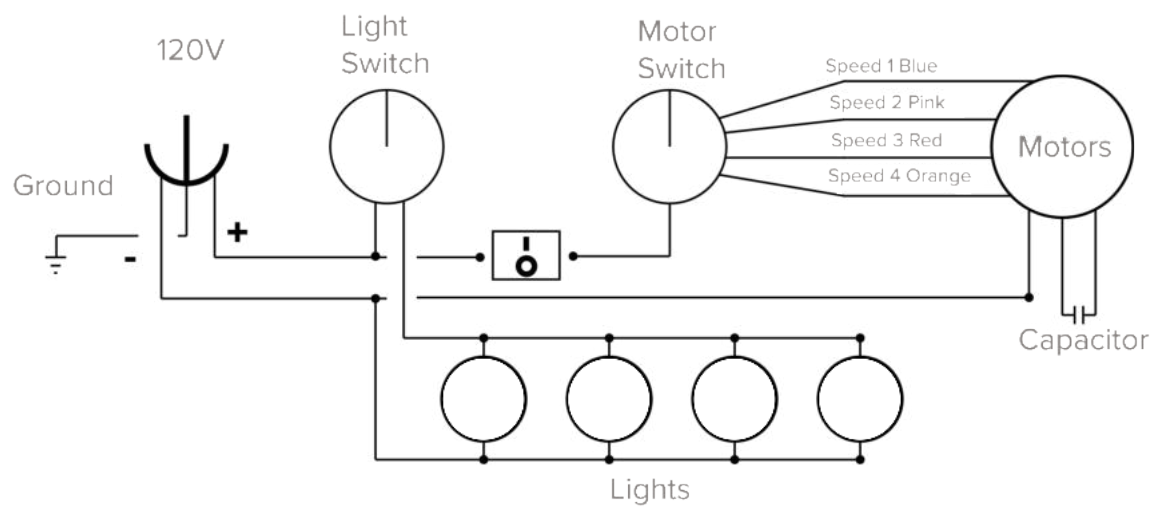


REAR VIEW
(OPTION)



VENT HOOD DIMENSIONS

| MODEL # | WIDTH | DEPTH | HEIGHT |
|---------|-------|-------|--------|
| VH36-2 | 36" | 30" | 18" |



GOLD STANDARD WARRANTY

Your investment in AMD Direct products is backed by the strongest warranty in the industry. In addition to precision engineering and outstanding performance, AMD Direct products include our GOLD STANDARD LIFETIME WARRANTY with all replacement parts 100% non-prorated. Effective with purchases as of 3/1/23.

AMD Direct Warranty is valid for original purchaser at original site of delivery with proof of purchase and photo documentation only. Registration form must be submitted online within 30 days of the purchase date to validate the warranty. Warranty is void upon transfer of ownership. Warranty does not apply to products installed in any commercial, rental, or nonresidential application that have not maintained proper upkeep. Warranty covers replacement parts only. Manufacturer is not responsible for labor or labor-related costs. Warranty does not cover discoloration, surface rust, corrosion, or oxidation, which may occur due to harsh environments, chemicals, or overheating. Warranty will not apply for damage resulting from improper installations, abuse, extreme environments, grease fires, or misuse. Proof of regular and proper maintenance is required. Coastal, humid, and/or salt environments are subject to manufacturer review. All out-of-box claims must be made within 30 days of purchase and must be made prior to installation. Any product installed damaged will be considered damaged during installation and not covered under warranty. Warranty and registration forms are available at www.amddirect.com/register. Please be advised - all display models are sold "as is" and the warranty covers the following items only: main burners (Gold Standard Lifetime Warranty), grates (Gold Standard Lifetime Warranty), burner covers (Gold Standard Lifetime Warranty). All warranties are subject to the review and approval of the manufacturer.

14520 DELTA LANE SUITE 105,
HUNTINGTON BEACH, CA 92647

800.966.8126

AMDDIRECT.COM



